



# CSMH 200 LHe Container

- No liquid nitrogen shielding or helium gas circulation required
- Lightweight but rugged construction stands up to trucking and everyday abuse
- Suitable for air transport<sup>1</sup>
- All welded construction
- Lowest loss rates in the industry
- All units equipped with integral caster base
- Easily removable and interchangeable manifolds
- Suitable for neon and all other liquid gases<sup>2</sup>
- Applications include distribution, research and liquefaction
- Two-year warranty on vacuum
- All vessels available with ASME • DOT • TPED • IATA1 • PED

**View  
Another  
Size?**

[30L](#)

[60L](#)

[100L](#)

[150L](#)

[250L](#)

[350L](#)

[500L](#)

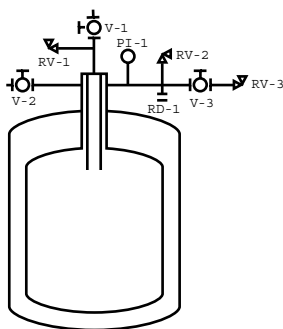
[1000L](#)

**Transport  
Vessels**

[250L](#)

[400L](#)

Net Capacity	200 L	200 L
Gross Capacity	220 L	220 L
Weight (Empty)	156 kg	343 lbs
Material of Construction	304 Stainless Steel	304 Stainless Steel
N.E.R. (Normal Evaporation Rate)	1 %	1 %
Operating Pressure	69 kPa	10 PSI
Design Pressure <sup>2</sup>	206.9 kPa	30 PSI
Neck ID	54 mm	2.12"
Depth (Flange to Bottom)	1221 mm	48"
Outside Overall Diameter	814 mm	32"
Height	1654 mm	65"
Maximum Transfer Line O.D.	19 mm	3/4"
Minimum Transfer Line O.D.	9.5 mm	3/8"
Transfer Line Length For Withdrawal	1450 mm	57"
Minimum Fill Lance Length	814 mm	32"
Caster Size	127 mm	5"
Vent Connection (MNPT)		1/2"



## Symbol Description

V-1	Liquid Valve
V-2	Vent Valve
V-3	Isolation Valve
RD-1	Rupture Disk*
RV-1	Relief Valve, 15 PSI
RV-2	Relief Valve, 10 PSI
RV-3	Pressure Control Valve, .5 PSI
PI-1	Compound Pressure Gauge 30" Hg-0-15 PSI

\*Only on capacities 200 Liters and greater.

## Available Options:



- Differential Pressure Liquid Level Gauges
- Super Conducting Liquid Level Systems
- Flow Meters
- Electric Pressure Building Systems
- Absolute Relief Valve For Air Transport
- Larger Neck Openings
- Auxiliary Side Neck
- Locking Casters (Pedal Lock)