

C5000 Cryogenic Valve - Manual & Actuated Options

1. Cryogenic Valve Model C5041-M11

.5" Vacuum Jacketed Valve, Manual Operation

1/2" O.D. Tube Size Cryogenic Valve

Manual Operation

Vacuum Jacketed

Globe Style Body

Features

Manual Operation (Actuators Available)

Vacuum Tight Upper Seal Assembly

Spring Loaded Dual O-ring Shaft Seal

All Stainless Steel Body and Jackets

Low Heat Transfer Stem Assembly

MLI on Jacketed Valves

KEL-F Seat Seal

Contoured Flow Plugs Available

Technical Data

150 PSIG MAWP

225 PSIG Proof

Heat Leak: 2.4 BTU/HR 77°K 3.1 BTU/HR To 4°K

Cooldown Mass: 0.18 Pounds

Seat Seal and Packing Leak Test Bubble Tight @ 150 PSIG @ Ambient Temperature

Adapters Available For Smaller Sizes

See P/N C1000KIT For Pneumatic Actuator Kit

Designed For Vertical Operation Only

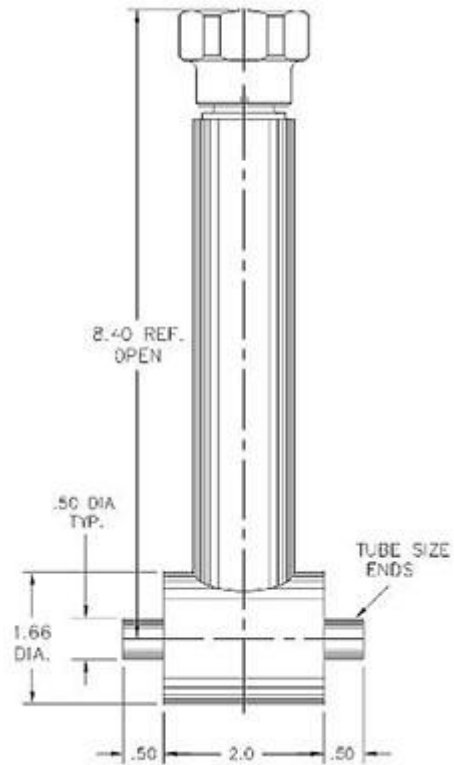
Replaces Cryolab® CV9 Valve Series

Applications

Vacuum Jacketed Piping

Cold Boxes

Cryogenic Piping Systems



2. Cryogenic Valve Model C5041-A11

.5" Vacuum Jacketed Globe Valve, Pneumatic Actuated Operation

1/2" O.D. Tube Size Cryogenic Valve

Actuated

Vacuum Jacketed

Globe Style Body

Features

Pneumatic Actuator

Vacuum Tight Upper Seal Assembly

Spring Loaded Dual O-ring Shaft Seal

Stainless Steel Body, Stem and Jacket

Low Heat Transfer Stem Assembly

MLI on Jacketed Valves

KEL-F Seat Seal

Contoured Flow Plugs Available

Technical Data

150 PSIG MAWP

225 PSIG Proof

Seat Seal and Packing Leak Test Bubble Tight @ 150 PSIG @ An

Adapters Available For Smaller Sizes

Designed For Vertical Operation Only

Heat Leak: 2.4 BTU/HR 77°K 3.1 BTU/HR To 4°K

Cooldown Mass: 0.18 Pounds

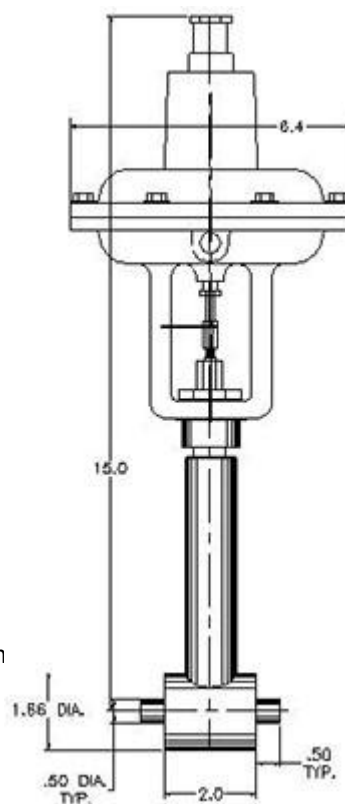
Replaces Cryolab® CV9 Valve Series

Applications

Vacuum Jacketed Piping

Cold Boxes

Cryogenic Piping Systems



3. Cryogenic Valve Model C5042-M11

.5" Vacuum Jacketed Right Angle Valve, Manual Operation

1/2" O.D. Tube Size Cryogenic Valve

Manual Operation

Vacuum Jacketed

Right Angle Style Body

Features

Manual Operation (Actuators Available)

Vacuum Tight Upper Seal Assembly

Spring Loaded Dual O-ring Shaft Seal

All Stainless Steel Body and Jackets

Low Heat Transfer Stem Assembly

MLI on Jacketed Valves

KEL-F Seat Seal

Contoured Flow Plugs Available

Technical Data

150 PSIG MAWP

225 PSIG Proof

Heat Leak: 2.4 BTU/HR 77°K

3.1 BTU/HR To 4°K

Cooldown Mass: 0.18 Pounds

Seat Seal and Packing Leak Test Bubble Tight @ 150 PSIG @ Ambient Temperature

Adapters Available For Smaller Sizes

See P/N C1000KIT For Pneumatic Actuator Kit

Designed For Vertical Operation Only

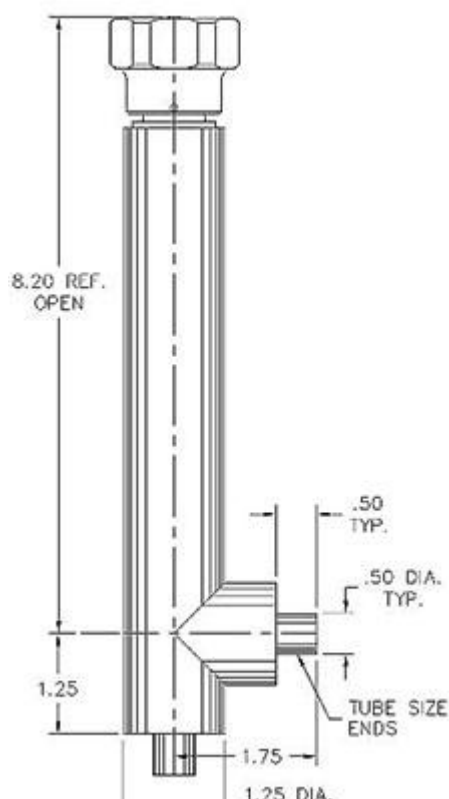
Replaces Cryolab® CV9 Valve Series

Applications

Vacuum Jacketed Piping

Cold Boxes

Cryogenic Piping Systems



4. Cryogenic Valve Model C5042-A11

.5" Vacuum Jacketed Right Angle Valve, Pneumatic Actuated Operation

1/2" O.D. Tube Size Cryogenic Valve

Actuated

Vacuum Jacketed

Right Angle Style Body

Features

Pneumatic Actuator

Vacuum Tight Upper Seal Assembly

Spring Loaded Dual O-ring Shaft Seal

Stainless Steel Body, Stem and Jacket

Low Heat Transfer Stem Assembly

MLI on Jacketed Valves

KEL-F Seat Seal

Contoured Flow Plugs Available

Technical Data

150 PSIG MAWP

225 PSIG Proof

Seat Seal and Packing Leak Test Bubble Tight @ 150 PSIG @ Ar

Adapters Available For Smaller Sizes

Designed For Vertical Operation Only

Heat Leak: 2.4 BTU/HR 77°K 3.1 BTU/HR To 4°

Cooldown Mass: 0.18 Pounds

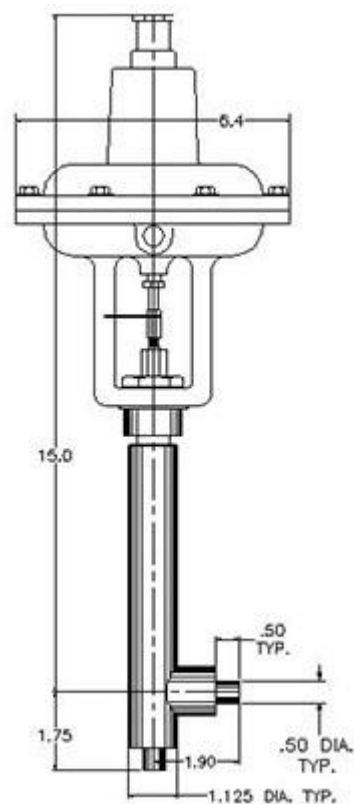
Replaces Cryolab® CV9 Valve Series

Applications

Vacuum Jacketed Piping

Cold Boxes

Cryogenic Piping Systems



5. Cryogenic Valve Model C5041-M13

.5" Vacuum Jacketed Globe Valve, Manual Operation

1/2" O.D. Tube Size Cryogenic Valve

Manual Operation

Cold Box Cuff

Globe Style Body

Features

Manual Handle (Actuators Available)

Vacuum Tight Upper Seal Assembly

Spring Loaded Dual O-ring Shaft Seal

All Stainless Steel Body and Jacket

Low Heat Transfer Stem Assembly

KEL-F Seat Seal

Contoured Flow Plugs Available

Technical Data

150 PSIG MAWP

225 PSIG Proof

Seat Seal and Packing Leak Test Bubble Tight @ 150 PSIG

Adapters Available For Smaller Sizes

See P/N C1000KIT For Pneumatic Actuator Kit

Heat Leak: 2.4 BTU/HR 77°K: 3.1 BTU/HR To 4°K

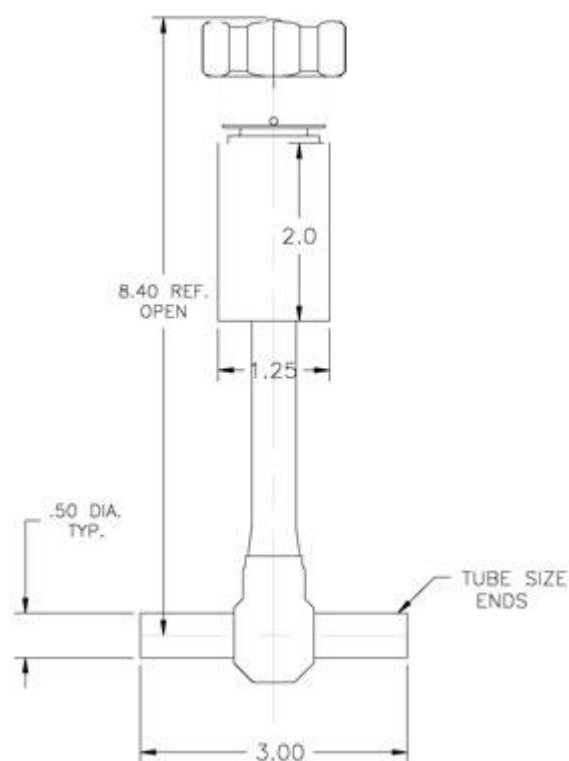
Cooldown Mass: 3.1 OZ

Applications

Vacuum Jacketed Piping

Cold Boxes

Cryogenic Piping Systems



6. Cryogenic Valve Model C5042-M13

.5" Cold Box Cuff Right Angle Valve, Manual Operation

1/2" O.D. Tube Size Cryogenic Valve

Manual Operation

Cold Box Cuff

Right Angle Style Body

Features

Manual Operation (Actuators Available)

Vacuum Tight Upper Seal Assembly

Spring Loaded Dual O-ring Shaft Seal

All Stainless Steel Body and Jackets

Low Heat Transfer Stem Assembly

KEL-F Seat Seal

Contoured Flow Plugs Available

Technical Data

150 PSIG MAWP

225 PSIG Proof

Seat Seal and Packing Leak Test Bubble Tight @ 150 PS

Adapters Available For Smaller Sizes

See P/N C1000KIT For Pneumatic Actuator Kit

Designed For Vertical Operation Only

Heat Leak: 2.4 BTU/HR 77°K 3.1 BTU/HR To 7°K

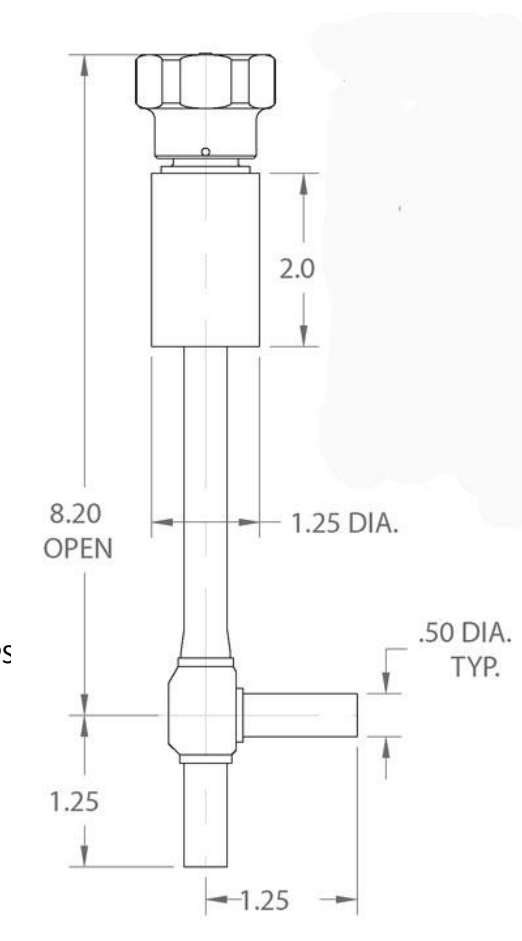
Cooldown Mass: 3.1 OZ

Applications

Vacuum Jacketed Piping

Cold Boxes

Cryogenic Piping Systems



7. Cryogenic Valve Model C5042-A13

.5" Cold Box Cuff Right Angle Valve, Pneumatic Actuated Operation

Features

Pneumatic Actuator Air to Open (Nc)

Upper Seal Assembly Vacuum Tight

Spring Loaded Dual O-Ring Shaft Seal

All Stainless Steel Body And Jacket

Low Heat Transfer Stem Assembly

KEL-F Seat Seal

Tube Size Ends

Technical Data

Max. Operating Pressure 150 PSIG

225 PSIG Proof

Seat Seal & Packing Leak Test Bubble Tight @ 150 PSIG @ Ambient T_i

Adapters Available for Smaller Sizes

Stem \varnothing in Vertical Position Only

Heat Leak: 2.4 BTU/HR to 77° K

Heat Leak: 3.1 BTU/HR to 4° K

Cooldown Mass = 3.1 OZ

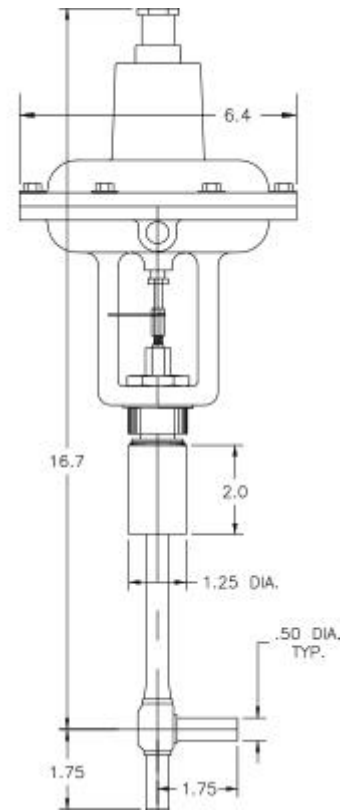
Applications

Vacuum Jacketed Piping

Cold Boxes

Helium Transfer Lines

Cryogenic Piping Systems



8. Cryogenic Valve Series C5000 Actuator

Actuator Adapter Kit for Cryocomp C5000 Series Valves and Cryolab® CV9 Series Valves

This kit will adapt the badger meter pneumatic actuator type 754 and 755-1/2" to the Cryocomp C5000 Series Valves or to the Cryolab® CV9 series valves. No disassembly of the valve is necessary.

