



CMSh 60 LHe Container

- No liquid nitrogen shielding or helium gas circulation required
- Lightweight but rugged construction stands up to trucking and everyday abuse
- Suitable for air transport¹
- All welded construction
- Lowest loss rates in the industry
- All units equipped with integral caster base
- Easily removable and interchangeable manifolds
- Suitable for neon and all other liquid gases²
- Applications include distribution, research and liquefaction
- Two-year warranty on vacuum
- All vessels available with ASME • DOT • TPED • IATA1 • PED

**View
Another
Size?**

[30L](#)

[100L](#)

[150L](#)

[200L](#)

[250L](#)

[350L](#)

[500L](#)

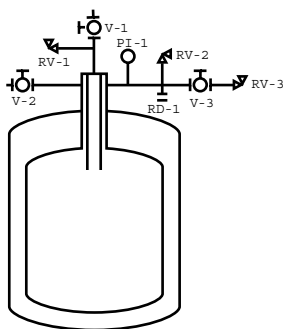
[1000L](#)

**Transport
Vessels**

[250L](#)

[400L](#)

Net Capacity	60 L	60 L
Gross Capacity	65 L	65 L
Weight (Empty)	87 kg	192 lbs
Material of Construction	304 Stainless Steel	304 Stainless Steel
N.E.R. (Normal Evaporation Rate)	1.5 %	1.5 %
Operating Pressure	69 kPa	10 PSI
Design Pressure ²	310.3 kPa	45 PSI
Neck ID	37 mm	1.45"
Depth (Flange to Bottom)	941 mm	37"
Outside Overall Diameter	611 mm	24"
Height	1298 mm	51"
Maximum Transfer Line O.D.	12.7 mm	1/2"
Minimum Transfer Line O.D.	9.5 mm	3/8"
Transfer Line Length For Withdrawal	1170 mm	46"
Minimum Fill Lance Length	764 mm	30"
Caster Size	102 mm	4"
Vent Connection (MNPT)		1/2"



Symbol Description

V-1	Liquid Valve
V-2	Vent Valve
V-3	Isolation Valve
RD-1	Rupture Disk*
RV-1	Relief Valve, 15 PSI
RV-2	Relief Valve, 10 PSI
RV-3	Pressure Control Valve, .5 PSI
PI-1	Compound Pressure Gauge 30" Hg-0-15 PSI

*Only on capacities 200 Liters and greater.

Available Options:



- Differential Pressure Liquid Level Gauges
- Super Conducting Liquid Level Systems
- Flow Meters
- Electric Pressure Building Systems
- Absolute Relief Valve For Air Transport
- Larger Neck Openings
- Auxiliary Side Neck
- Removable Dollies
- Outboard Caster Configuration
- Locking Casters (Pedal Lock)